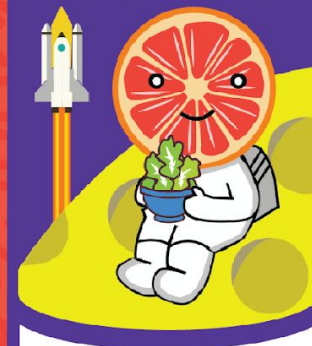


# Promesa Academy - Breakfast

# FEB

## MENU 2024

# JOHNSON SPACE CENTER



**Key Terms:**  
WG = Whole Grain  
WW = Whole Wheat

### MONDAY

### TUESDAY

### WEDNESDAY

### THURSDAY

### FRIDAY

				1 <sup>ST</sup> <b>Fruit &amp; Yogurt Plate</b> Vanilla Yogurt Granola Diced Mango 100% Orange Juice Milk	2 <sup>ND</sup> WG Strawberry Poptart Mandarin Orange Cup 100% Apple Juice Milk
5 <sup>TH</sup> WW French Toast Sticks Cinn/Raisin Peaches Milk (Syrup)	6 <sup>TH</sup> Cereal: WG Cinnamon Toasters Honey Graham Crackers Fresh Banana Milk	7 <sup>TH</sup> <b>Breakfast Sandwich</b> Turkey Sausage Patty WW English Muffin Cinn/Raisin Apples 100% Orange Juice Milk	8 <sup>TH</sup> <b>Breakfast Tacos – 2</b> Bean & Cheese on WW Tortilla Mixed Fruit Cup 100% Apple Juice Milk	9 <sup>TH</sup> Raspberry Cereal Bar WW Animal Cracker Diced Pear Cup 100% Grape Juice Milk	
12 <sup>TH</sup> WW Pancakes Cinn/Raisin Peaches Milk (Syrup)	13 <sup>TH</sup> Cereal: WG Trix Cereal Mozzarella String Cheese Fresh Banana Milk	14 <sup>TH</sup> WW Biscuit Assorted Jelly Pineapple Tidbit Cup 100% Grape Juice Milk	15 <sup>TH</sup> <b>Fruit &amp; Yogurt Plate</b> Vanilla Yogurt Granola Mixed Berries 100% Orange Juice Milk	16 <sup>TH</sup> <b>CLOSED</b> <b>STUDENT HOLIDAY</b>	
19 <sup>TH</sup> <b>CLOSED</b> <b>PRESIDENTS DAY</b>	20 <sup>TH</sup> Cereal: WG Cheerios Cinnamon Goldfish Crackers Fresh Banana Milk	21 <sup>ST</sup> Blueberry Cereal Bar Mozzarella String Cheese Diced Pear Cup 100% Grape Juice Milk	22 <sup>ND</sup> WG Waffle Cinn/Raisin Peaches 100% Apple Juice Milk (Syrup)	23 <sup>RD</sup> <b>Breakfast Pizza</b> WG Turkey Sausage Pizza Mixed Fruit Cup 100% Orange Juice Milk	
26 <sup>TH</sup> <b>Breakfast Sandwich</b> Turkey Canadian Bacon w/ Cheese on WG Biscuit Cinn/Raisin Apples Milk	27 <sup>TH</sup> Cereal: WG Frosted Flakes Mozzarella String Cheese Fresh Banana Milk	28 <sup>TH</sup> WG Waffle Cinn/Raisin Peaches 100% Grape Juice Milk (Syrup)	29 <sup>TH</sup> <b>Fruit &amp; Yogurt Plate</b> Vanilla Yogurt Granola Diced Mango 100% Orange Juice Milk		



Food and Nutrition Division  
National School Lunch Program

TEXAS DEPARTMENT OF AGRICULTURE  
**COMMISSIONER SID MILLER**

This product was funded by USDA.  
This institution is an equal opportunity provider.



Updated 2/1/2024  
www.SquareMeals.org

# JOHNSON SPACE CENTER



**Key Terms:**  
 LS = Low Sodium  
 WG = Whole Grain  
 WW = Whole Wheat

## MONDAY

## TUESDAY

## WEDNESDAY

## THURSDAY

## FRIDAY

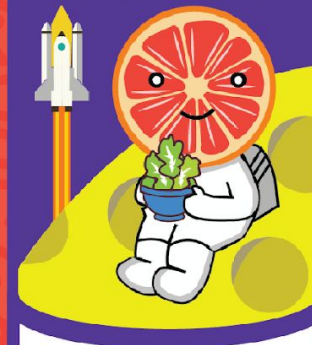
				<b>1<sup>ST</sup> Papa John's Pizza</b> WW Cheese or Pepperoni Pizza Baby Carrots Side Salad Fresh Whole Fruit Milk (FF Ranch Dressing)	<b>2<sup>ND</sup> Sweet &amp; Sour Chicken</b> WG Chicken Nuggets w/ Sweet & Sour Sauce over Steamed Brown Rice Mixed Veggie Blend Seasoned Zucchini Fresh Orange Wedges Milk
<b>5<sup>TH</sup></b> Breaded Chicken Tenders Green Beans Potatoes Au Gratin Pineapple Tidbit Cup Milk (Ketchup)	<b>6<sup>TH</sup></b> Turkey Sloppy Joes on WW Hamburger Bun Oven Fries Steamed Carrots Fresh Orange Wedges Milk (Ketchup)	<b>7<sup>TH</sup></b> Cheese Enchiladas w/ Ranchero Sauce Mexicali Corn Pinto Beans Mandarin Orange Cup Milk	<b>8<sup>TH</sup></b> <b>Papa John's Pizza</b> WW Cheese or Pepperoni Pizza Baby Carrots Side Salad Applesauce Cup Milk (FF Ranch Dressing)	<b>9<sup>TH</sup></b> <b>Chicken Parmesan</b> Breaded Chicken Patty w/ Cheese & Spaghetti Sauce WW Spaghetti Steamed Broccoli Buttered Yellow Squash Fresh Orange Wedges Milk	
<b>12<sup>TH</sup></b> WG Cheese Ravioli Spaghetti Sauce WW Roll Green Beans Black-Eyed Peas Fresh Orange Wedges Milk	<b>13<sup>TH</sup></b> Breaded Steak Fingers Mashed Potatoes Normandy Veggie Blend Diced Pear Cup Milk (Ketchup)	<b>14<sup>TH</sup></b> Cheeseburger on WW Hamburger Bun Tater Tots Buttered Carrots Fresh Orange Wedges Milk (Ketchup; Mustard)	<b>15<sup>TH</sup></b> <b>Papa John's Pizza</b> WW Cheese or Pepperoni Pizza Baby Carrots Side Salad Diced Peach Cup Milk (FF Ranch Dressing)	<b>16<sup>TH</sup></b> <b>CLOSED</b> <b>STUDENT HOLIDAY</b>	
<b>19<sup>TH</sup></b> <b>CLOSED</b> <b>PRESIDENTS DAY</b>	<b>20<sup>TH</sup></b> <b>Taco Tuesday</b> Ground Turkey & Cheese w/ WW Tortilla Lettuce/Tomato Cup Pinto Beans Diced Peach Cup Milk	<b>21<sup>ST</sup></b> Turkey Hot Dog on WW Hot Dog Bun Sweet Potato Tots Green Beans Fresh Orange Wedges Milk (Ketchup; Mustard)	<b>22<sup>ND</sup></b> <b>Papa John's Pizza</b> WW Cheese or Pepperoni Pizza Baby Carrots Side Salad Applesauce Cup Milk (FF Ranch Dressing)	<b>23<sup>RD</sup></b> WG Mini Corn Dogs Steamed Corn Italian Veggie Blend Fresh Orange Wedges Milk (Ketchup; Mustard)	
<b>26<sup>TH</sup></b> WG Chicken Nuggets Mashed Potatoes Broccoli w/ Cheese Fresh Orange Wedges Milk (Ketchup)	<b>27<sup>TH</sup></b> Lemon Herb Chicken WW Roll Pinto Beans Buttered Carrots Fresh Whole Fruit Milk	<b>28<sup>TH</sup></b> <b>Spaghetti &amp; Meat Sauce</b> Ground Turkey & Sauce on WW Spaghetti Seasoned Cauliflower Capri Veggie Blend Fresh Orange Wedges Milk	<b>29<sup>TH</sup></b> <b>Papa John's Pizza</b> WW Cheese or Pepperoni Pizza Baby Carrots Side Salad Fresh Whole Fruit Milk (FF Ranch Dressing)		

# Promesa Academy - Snack

# FEB

MENU 2024

## JOHNSON SPACE CENTER



**Key Terms:**  
WG = Whole Grain  
WW = Whole Wheat

**MONDAY**

**TUESDAY**

**WEDNESDAY**

**THURSDAY**

**FRIDAY**

			1 <sup>ST</sup>	2 <sup>ND</sup>
			WW Animal Cracker Sunbutter Cup	Baby Carrots Multi-Grain Sun Chips
5 <sup>TH</sup>	6 <sup>TH</sup>	7 <sup>TH</sup>	8 <sup>TH</sup>	9 <sup>TH</sup>
WW Animal Cracker Mozzarella String Cheese	Granola Packet Fruit Yogurt Cup	WG Cheddar Goldfish 100% Orange Juice	Strawberry Chex Mix Fresh Banana	Cheddar Rectangle (2) Cinnamon Goldfish Crackers
12 <sup>TH</sup>	13 <sup>TH</sup>	14 <sup>TH</sup>	15 <sup>TH</sup>	16 <sup>TH</sup>
100% Orange Juice Mozzarella String Cheese	Baby Carrots Honey Graham Crackers (2)	100% Orange Juice WG Cheddar Goldfish	Multi-Grain Sun Chips Fresh Banana	<b>CLOSED</b> <b>STUDENT HOLIDAY</b>
19 <sup>TH</sup>	20 <sup>TH</sup>	21 <sup>ST</sup>	22 <sup>ND</sup>	23 <sup>RD</sup>
<b>CLOSED</b> <b>PRESIDENTS DAY</b>	Mozzarella String Cheese Honey Graham Crackers (2)	Cheddar Rectangle (2) WW Animal Crackers	Fresh Banana Cinn. Goldfish Crackers	Strawberry Chex Mix 100% Orange Juice
26 <sup>TH</sup>	27 <sup>TH</sup>	28 <sup>TH</sup>	29 <sup>TH</sup>	
Honey Graham Crackers (2) 100% Orange Juice	WG Cheddar Goldfish Cheddar Rectangle (2)	Mozzarella String Cheese Cinnamon Goldfish Crackers	WW Animal Cracker Sunbutter Cup	



Food and Nutrition Division  
National School Lunch Program

TEXAS DEPARTMENT OF AGRICULTURE  
**COMMISSIONER SID MILLER**

This product was funded by USDA.  
This institution is an equal opportunity provider.



Updated 2/1/2024  
www.SquareMeals.org